



June 15, 2026

The Honorable Shane Brassell
Hill County Judge
P.O. Box 457
Hillsboro, TX 76645

Re: Request for Information
Lone Star Transmission, LLC Liberty to Mercury III 345-kV Transmission Line Project

Dear Judge Shane Brassell,

Lone Star Transmission, LLC (Lone Star) is proposing to design and construct a new 345-kilovolt (kV) electric transmission line in southern Hill County and northern Limestone County, Texas, to interconnect the proposed Mercury Solar III development. The proposed transmission line would be constructed between Lone Star's existing Liberty Station in Hill County and the proposed Point of Interconnection (POI) at the Mercury Solar III Station in Limestone County, Texas (Project). The proposed Project may be approximately 9 to 12 miles in length, depending on the alternative selected, and will require a right-of-way (ROW) between 150 and 200 feet in width.

The Liberty Station is located at 116 County Road (CR) 3274, Mount Calm, Texas approximately 1 mile southwest of the Farm-to-Market Road (FM) 339 and N 1st Street intersection in Hill County, while the proposed POI and the Mercury Solar III Station are located along CR 138, approximately 0.15 miles southwest of its intersection with CR 152 in Limestone County. Please reference the locations of the Liberty Station and the Mercury Solar III Station within the study area depicted on the attached map.

Burns & McDonnell is preparing an Environmental Assessment (EA) and Alternative Route Analysis for the proposed Project that will support Lone Star's application for a Certificate of Convenience and Necessity from the Public Utility Commission of Texas. Burns & McDonnell is in the process of collecting and evaluating environmental data for the study area. As part of this effort, we are asking that your agency/office tell us about any environmental or land use concerns that you may have regarding the siting and potential environmental effects from the construction of the proposed transmission line in the designated study area.

Additionally, if any permits, easements, or other approvals by your agency/office are required, or if you are aware of any major proposed development or construction in the study area, we would appreciate receiving this information as well.

June 15, 2026

Your input on any of the following resources as they relate to your agency or office will assist the Project team in evaluating the proposed Project:

- Land use (current or proposed land development projects, park/recreation areas, etc.)
- Aesthetics
- Water quality and wetlands
- Soils and geology
- Wildlife, vegetation, and fisheries (including threatened and endangered species)
- Socioeconomics (population, employment, growth, current/future development)
- Cultural resources (historic and archeological)
- Transportation and roads (airport and roadway expansions, construction, operations, and maintenance)

Burns & McDonnell would like to thank you in advance for your comments, which will be an important consideration in our assessment of potential environmental and land use impacts of the proposed transmission line. If you have any questions concerning this project or our request for information, please contact me at djgreen@burnsmcd.com or 512-663-5542. Your earliest reply will be appreciated.

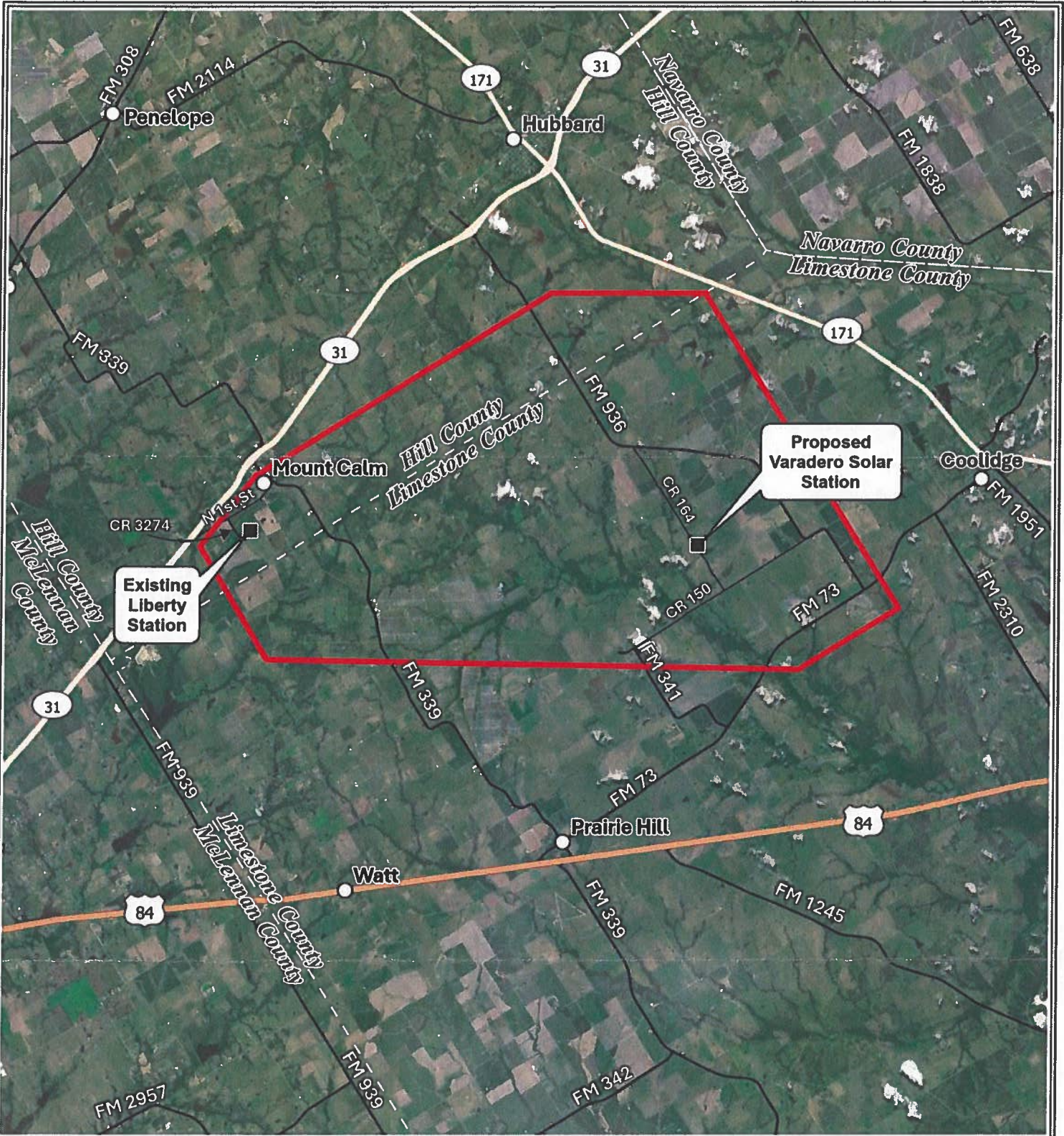
Sincerely,

A handwritten signature in blue ink that reads "Derek Green".

Derek Green
Senior Environmental Scientist

Attachment

cc: Tracy Wiczorek, Lone Star Transmission, LLC
Tracy Davis, Lone Star Transmission, LLC
Brooke Searles, NextEra Energy – Environmental Services for Lone Star Transmission, LLC



Existing Liberty Station

Proposed Varadero Solar Station



- Project Endpoint
- ▭ Study Area



Scale: 1:158,400
 Date: 6/10/2026
 Data Sources:

Burns & McDonnell, Esri, TXDoT, USGS, Lone Star Transmission



**Liberty to Varadero
 345 kV Transmission Line Project
 Lone Star Transmission
 Hill and Limestone
 Counties, TX**



